

Deutschland / Germany

21502 Geesthacht

Hansastraße 9

Dr. Wolfgang Kabatzke

File: ECB-ModPrn-R03.kicad_pcb

Sheet: 1/1

Title: ECB-ModPrn

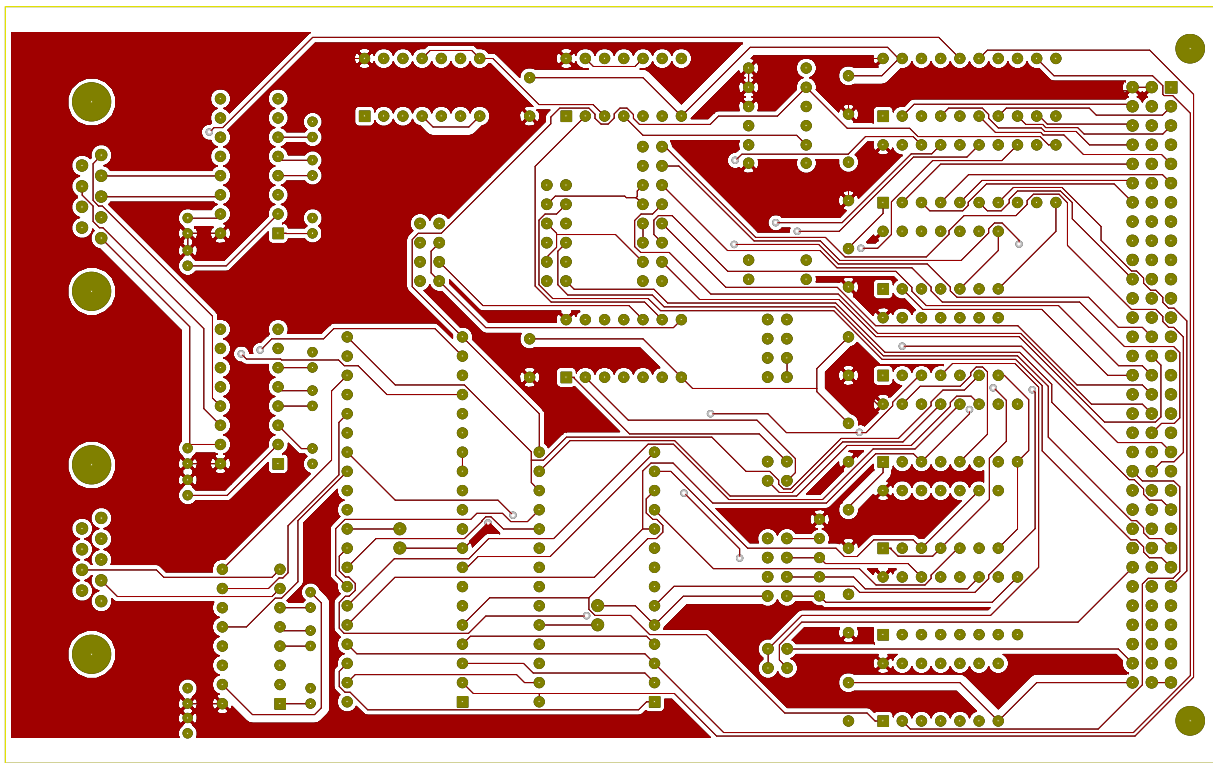
Size: A4

Date: 21 feb 2015

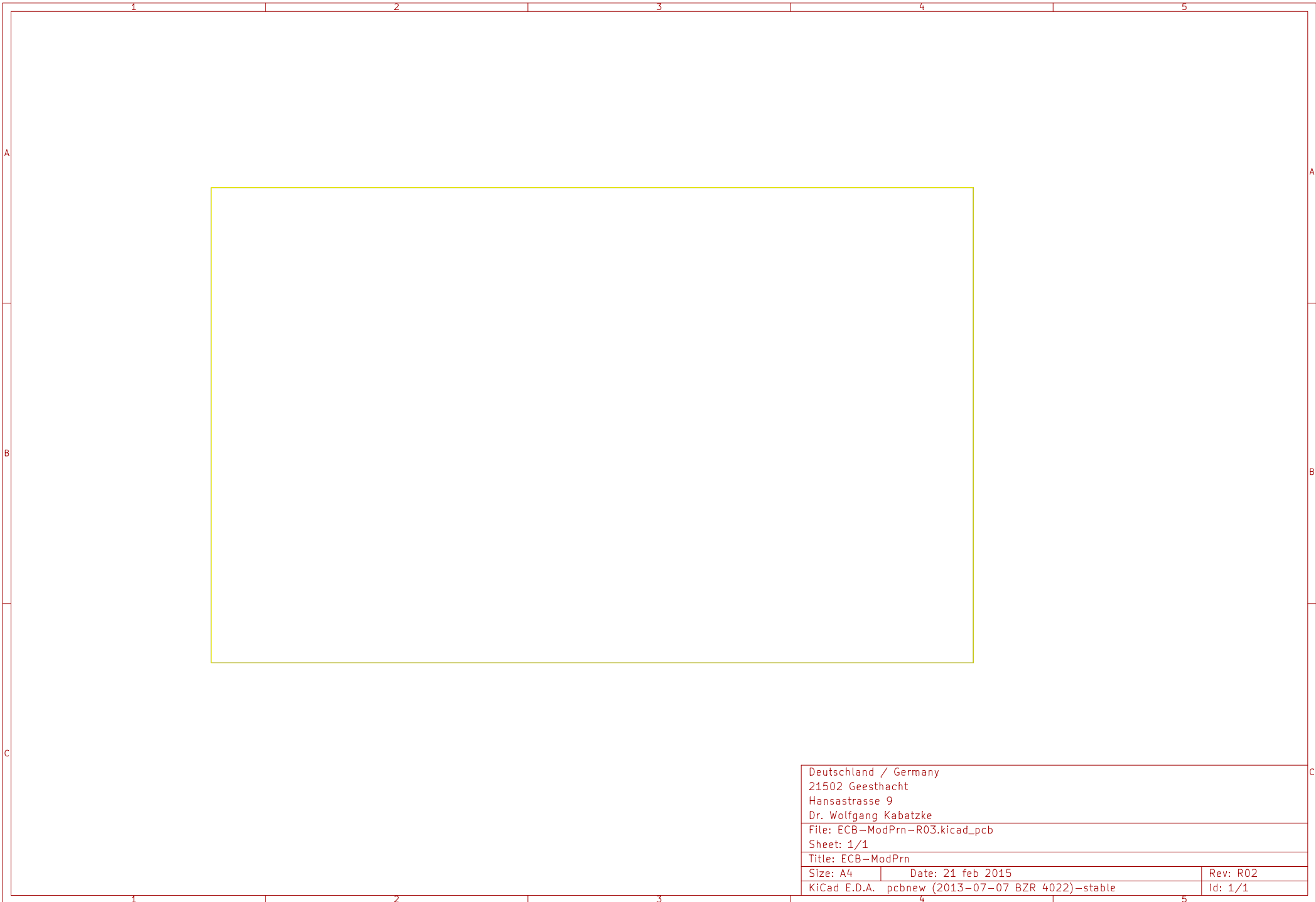
Rev: R02

KiCad E.D.A. pcbnew (2013-07-07 BZR 4022)-stable

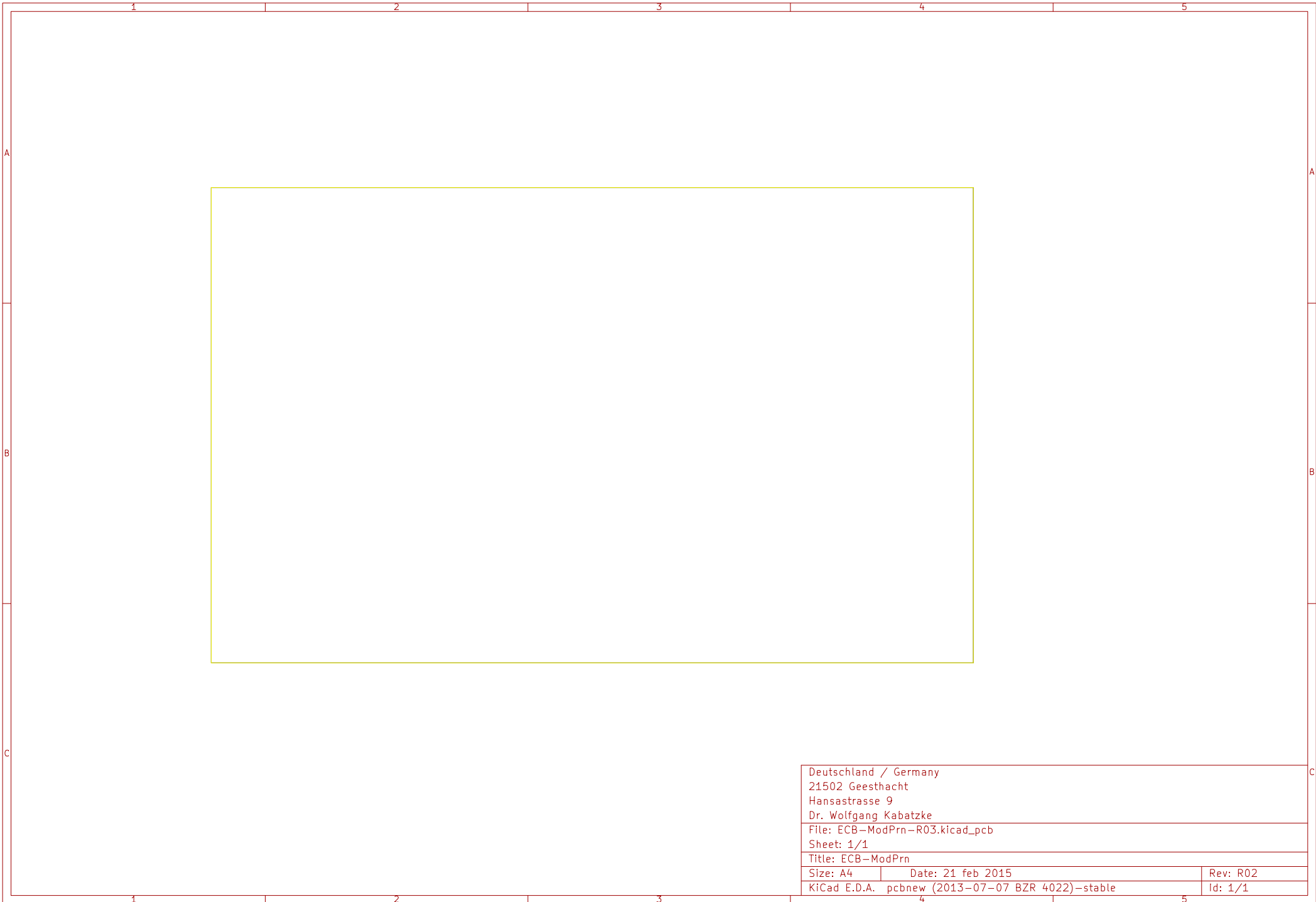
Id: 1/1



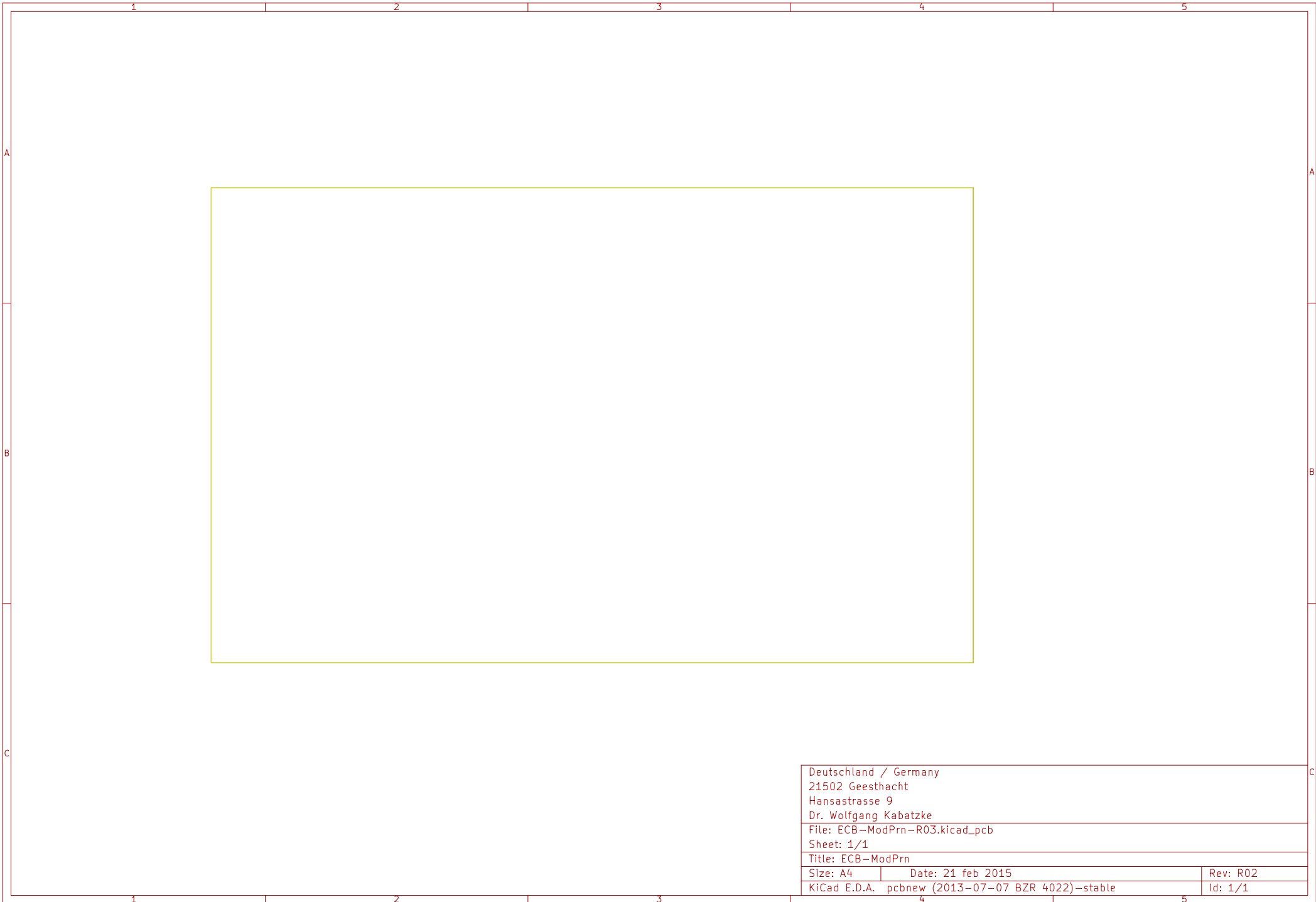
Deutschland / Germany		
21502 Geesthacht		
Hansastraße 9		
Dr. Wolfgang Kabatzke		
File: ECB-ModPrn-R03.kicad_pcb		
Sheet: 1/1		
Title: ECB-ModPrn		
Size: A4	Date: 21 feb 2015	Rev: R02
KiCad E.D.A.	pcbnew (2013-07-07 BZR 4022)-stable	Id: 1/1



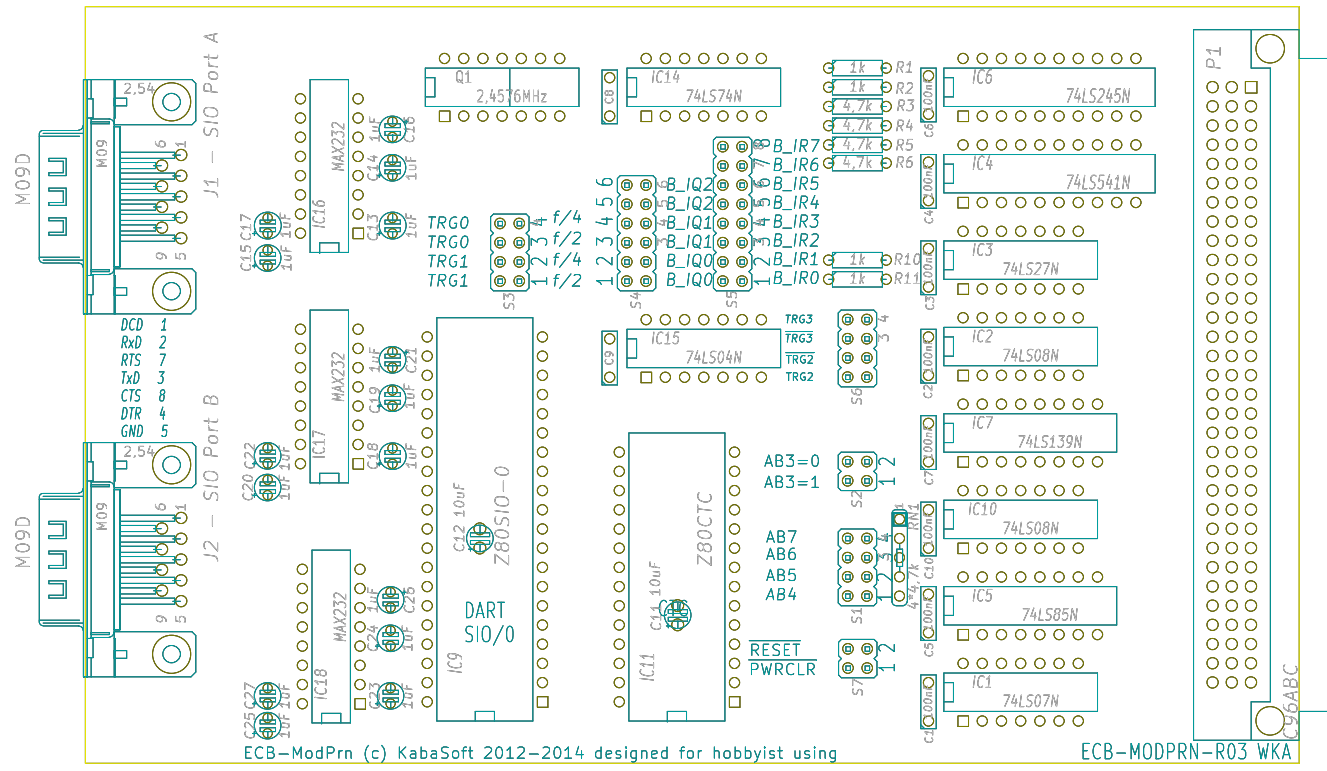
Deutschland / Germany		
21502 Geesthacht		
Hansastrasse 9		
Dr. Wolfgang Kabatzke		
File: ECB-ModPrn-R03.kicad_pcb		
Sheet: 1/1		
Title: ECB-ModPrn		
Size: A4	Date: 21 feb 2015	Rev: R02
KiCad E.D.A. pcbnew (2013-07-07 BZR 4022)-stable	Id: 1/1	



Deutschland / Germany		
21502 Geesthacht		
Hansastrasse 9		
Dr. Wolfgang Kabatzke		
File: ECB-ModPrn-R03.kicad_pcb		
Sheet: 1/1		
Title: ECB-ModPrn		
Size: A4	Date: 21 feb 2015	Rev: R02
KiCad E.D.A. pcbnew (2013-07-07 BZR 4022)-stable		Id: 1/1



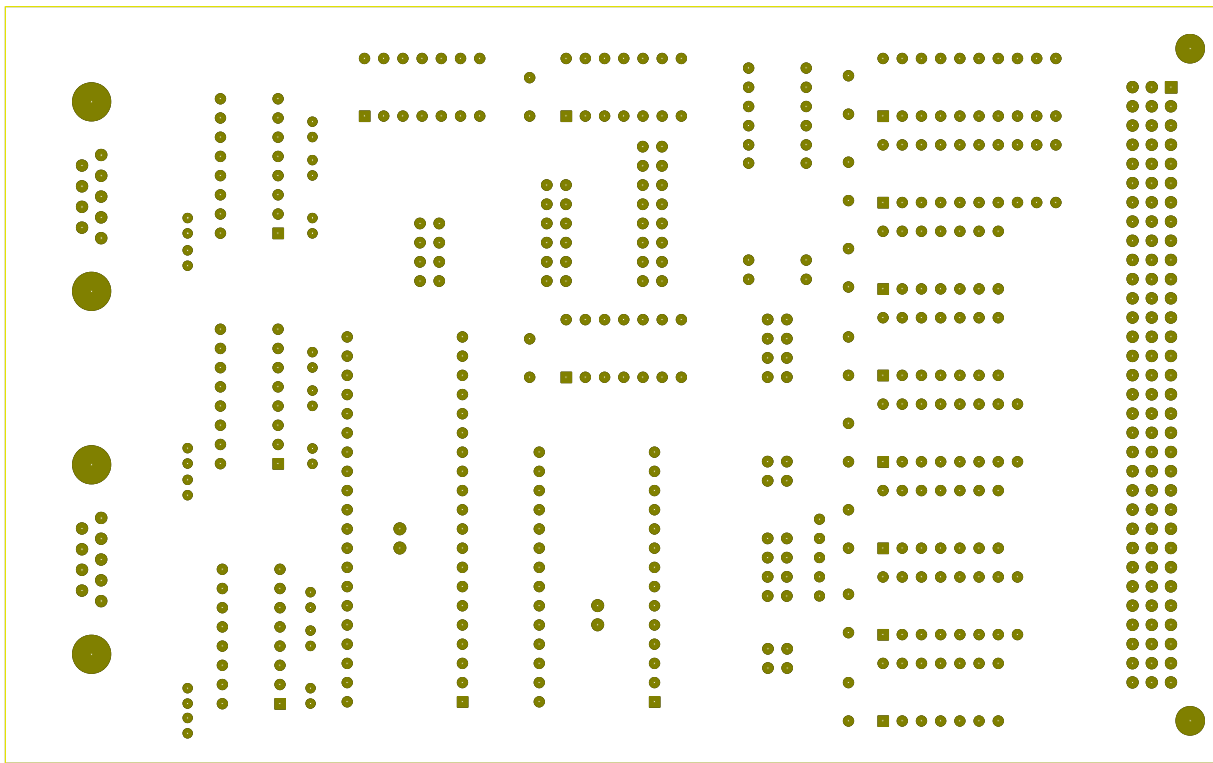
Deutschland / Germany		
21502 Geesthacht		
Hansastrasse 9		
Dr. Wolfgang Kabatzke		
File: ECB-ModPrn-R03.kicad_pcb		
Sheet: 1/1		
Title: ECB-ModPrn		
Size: A4	Date: 21 feb 2015	Rev: R02
KiCad E.D.A. pcbnew (2013-07-07 BZR 4022)-stable	Id: 1/1	



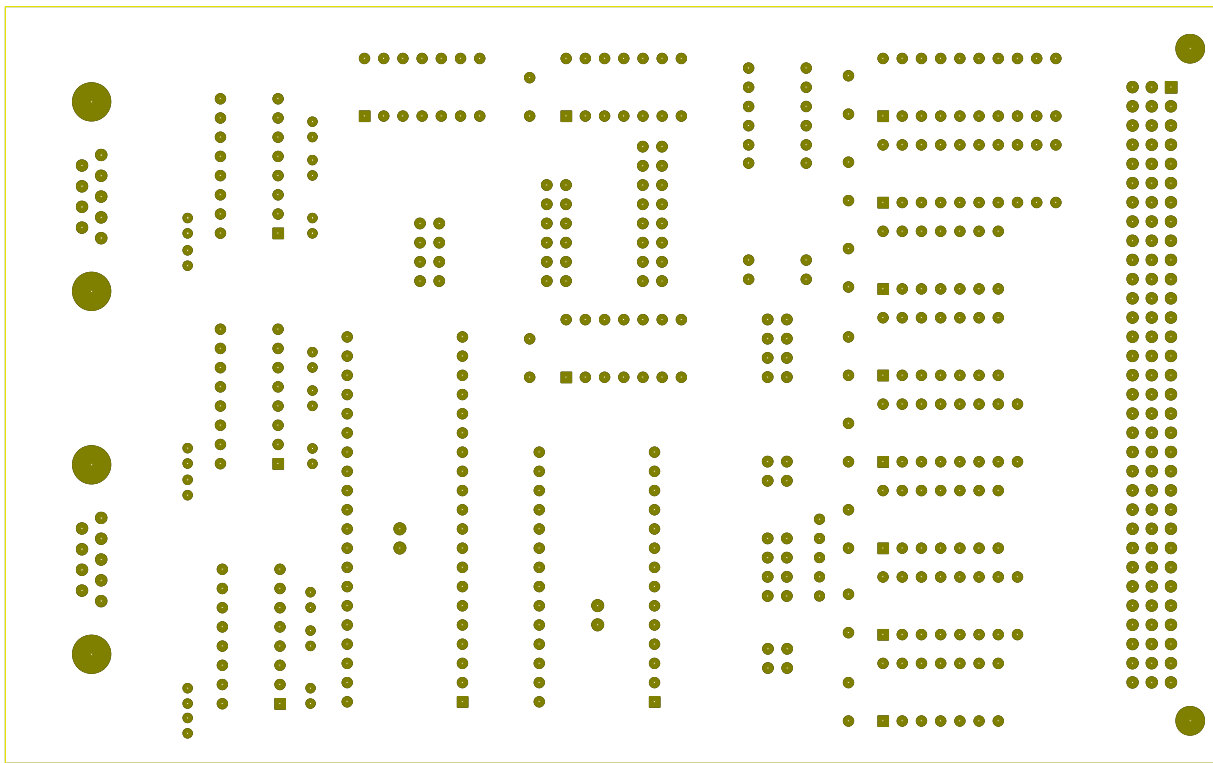
ECB-ModPrn (c) KabaSoft 2012-2014 designed for hobbyist using

ECB-MODPRN-R03 WKA

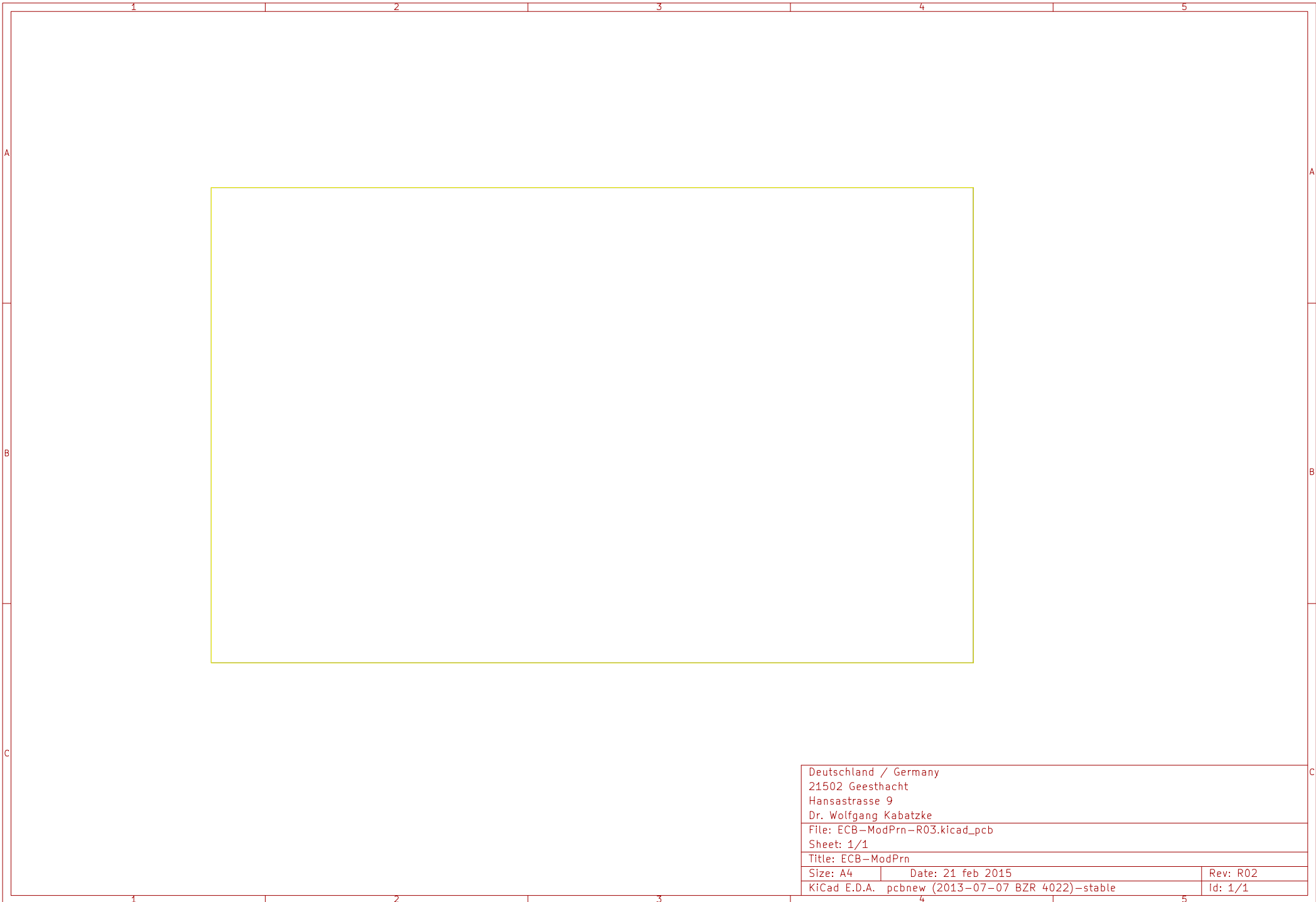
Deutschland / Germany		
21502 Geesthacht		
Hansastraße 9		
Dr. Wolfgang Kabatzke		
File: ECB-ModPrn-R03.kicad_pcb		
Sheet: 1/1		
Title: ECB-ModPrn		
Size: A4	Date: 21 feb 2015	Rev: R02
KiCad E.D.A. pcbnew (2013-07-07 BZR 4022)-stable		Id: 1/1



Deutschland / Germany 21502 Geesthacht Hansastraße 9 Dr. Wolfgang Kabatzke		
File: ECB-ModPrn-R03.kicad_pcb		
Sheet: 1/1		
Title: ECB-ModPrn		
Size: A4	Date: 21 feb 2015	Rev: R02
KiCad E.D.A. pcbnew (2013-07-07 BZR 4022)-stable		Id: 1/1



Deutschland / Germany 21502 Geesthacht Hansastraße 9 Dr. Wolfgang Kabatzke		
File: ECB-ModPrn-R03.kicad_pcb		
Sheet: 1/1		
Title: ECB-ModPrn		
Size: A4	Date: 21 feb 2015	Rev: R02
KiCad E.D.A.	pcbnew (2013-07-07 BZR 4022)-stable	Id: 1/1



Deutschland / Germany		
21502 Geesthacht		
Hansastraße 9		
Dr. Wolfgang Kabatzke		
File: ECB-ModPrn-R03.kicad_pcb		
Sheet: 1/1		
Title: ECB-ModPrn		
Size: A4	Date: 21 feb 2015	Rev: R02
KiCad E.D.A. pcbnew (2013-07-07 BZR 4022)-stable		Id: 1/1

