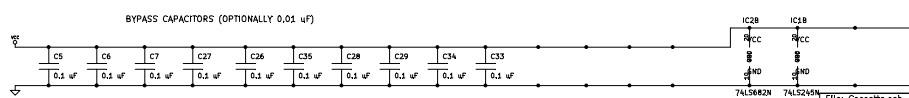
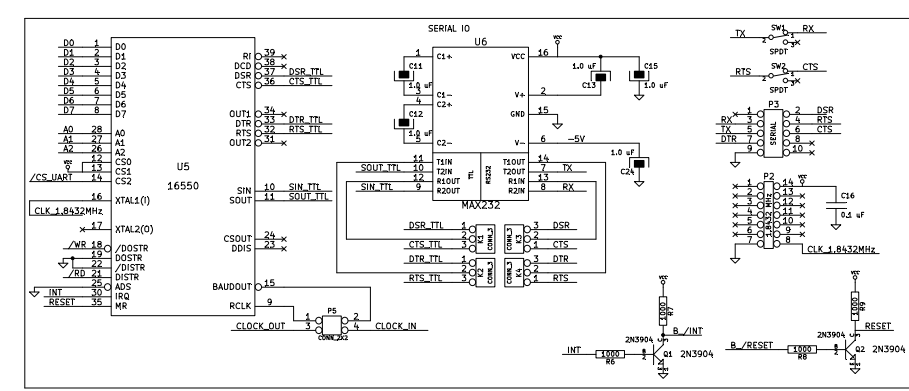
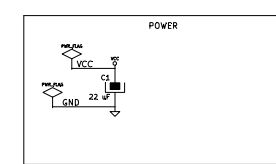
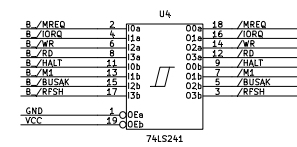
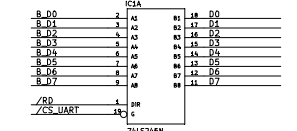
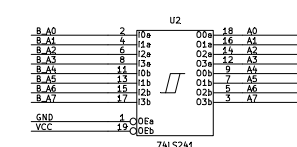
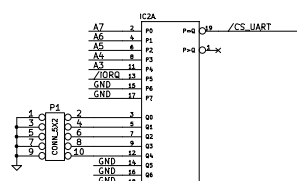


NOTE: CHANGE C2 TO 0.005 uF AND R11 TO 5.1K FOR 600 BAUD OPERATION



IC8 CONNECTOR		U7
B/VCC	A1	1A
B/VCC	C1	1B
B/D5	A2	2A
B/D0	B2	2B
B/D0	C2	2C
B/A6	A3	3A
B/A2	B3	3B
B/D7	C3	3C
B/D3	A4	4A
B/A2	B4	4B
B/D4	A5	4C
B/A2	B5	5B
B/D0	C5	5C
B/A2	A6	6A
B/A3	B6	6B
B/A4	A7	7A
B/D9	B7	7B
B/A1	C7	7C
B/D10	B8	8A
B/A8	C8	8C
B/A9	A9	9A
B/D11	B9	9B
B/INT	C9	9C
B/D12	B10	10B
B/D10	C10	10C
B/BUSRQ	A11	11A
B/D11	C11	11C
B/D12	A12	12A
B/D14	B12	12B
B/D12	C12	12C
B/D13	A13	13A
B/D15	B13	13B
B/D13	C13	13C
B/D14	A14	14A
B/D07	B14	14B
B/D15	C14	14C
B/D15	A15	15A
B/D06	B15	15B
B/D15	C15	15C
B/D16	A16	16A
B/D16	B16	16B
B/D16	C16	16C
B/D17	A17	17A
B/D17	B17	17B
B/D17	C17	17C
B/D18	A18	18A
B/D18	B18	18B
B/D18	C18	18C
B/D19	A19	19A
B/D19	B19	19B
B/D19	C19	19C
B/D20	A20	20A
B/D20	B20	20B
B/D20	C20	20C
B/D21	A21	21A
B/D21	B21	21B
B/D21	C21	21C
B/D22	A22	22A
B/D22	B22	22B
B/D22	C22	22C
B/D23	A23	23A
B/D23	B23	23B
B/D23	C23	23C
B/D24	A24	24A
B/D24	B24	24B
B/D24	C24	24C
B/D25	A25	25A
B/D25	B25	25B
B/D25	C25	25C
B/D26	A26	26A
B/D26	B26	26B
B/D26	C26	26C
B/D27	A27	27A
B/D27	B27	27B
B/D27	C27	27C
B/D28	A28	28A
B/D28	B28	28B
B/D28	C28	28C
B/D29	A29	29A
B/D29	B29	29B
B/D29	C29	29C
B/D30	A30	30A
B/D30	B30	30B
B/D30	C30	30C
B/D31	A31	31A
B/D31	B31	31B
B/D31	C31	31C
B/D32	A32	32A
B/D32	B32	32B
B/D32	C32	32C