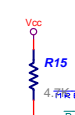
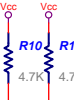
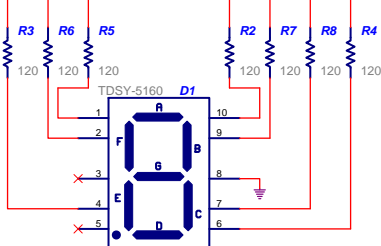
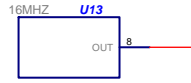


hardware handshake
utilize interrupt inputs
connect CF interrupt to one of inputs



RT is like IACK
Use R/V instead
Bring in DTACKS

- 5 modes of operations
- 1. CPLD checkout
- 2. Serial bootstrap
- 3. Program EPROM
- 4. EPROM boot
- 5. Bring up CP/M & OS